



**CHANDLER  
CABINETS**

# *Door Styles*

**Traditional  
SQ-AA1**



**Shaker  
SQ-CF4**



**Transitional  
SQ-DF4**



**Flat Panel  
SQ-AF1**



**Eyebrow Arch  
EB-AA1**



**Cathedral Arch  
CA-AA1**



# *Door Styles*

**Bead Board  
SQ-AG1**



**Mitered  
MTR #30  
Raised Panel**



**Traditional AA1  
w/paneled front**



**Modern Slab  
Full Overlay**



**Traditional  
SQ-C-IBM-E1  
w/paneled front**



**Inset  
w/bead mould  
AA4**



# *Glass doors*



**C-pattern**



**D-pattern**



**Square-pattern**



**O-pattern**



**X-pattern**



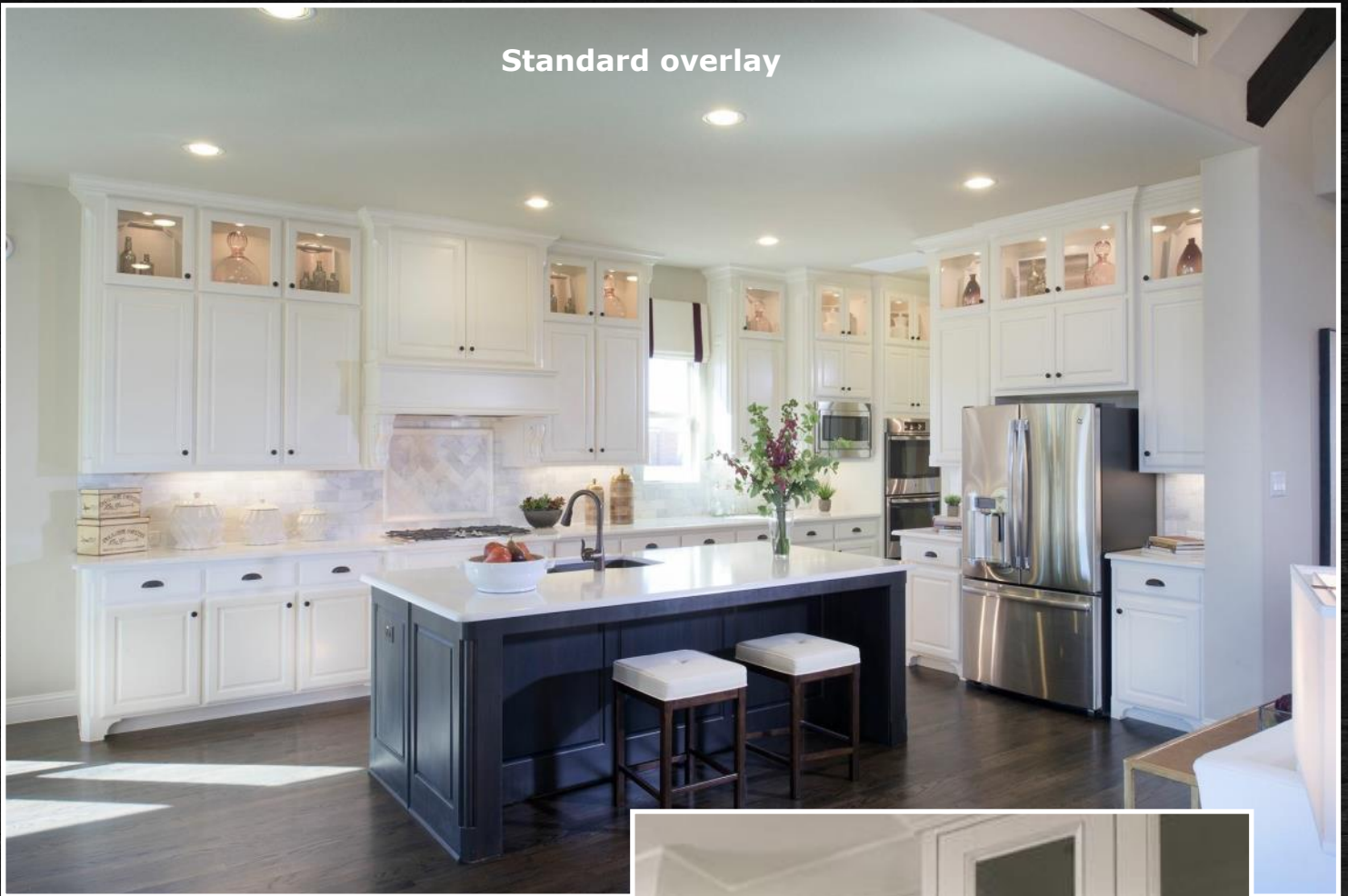
**Six pane**



**Square glass**



**Standard overlay**



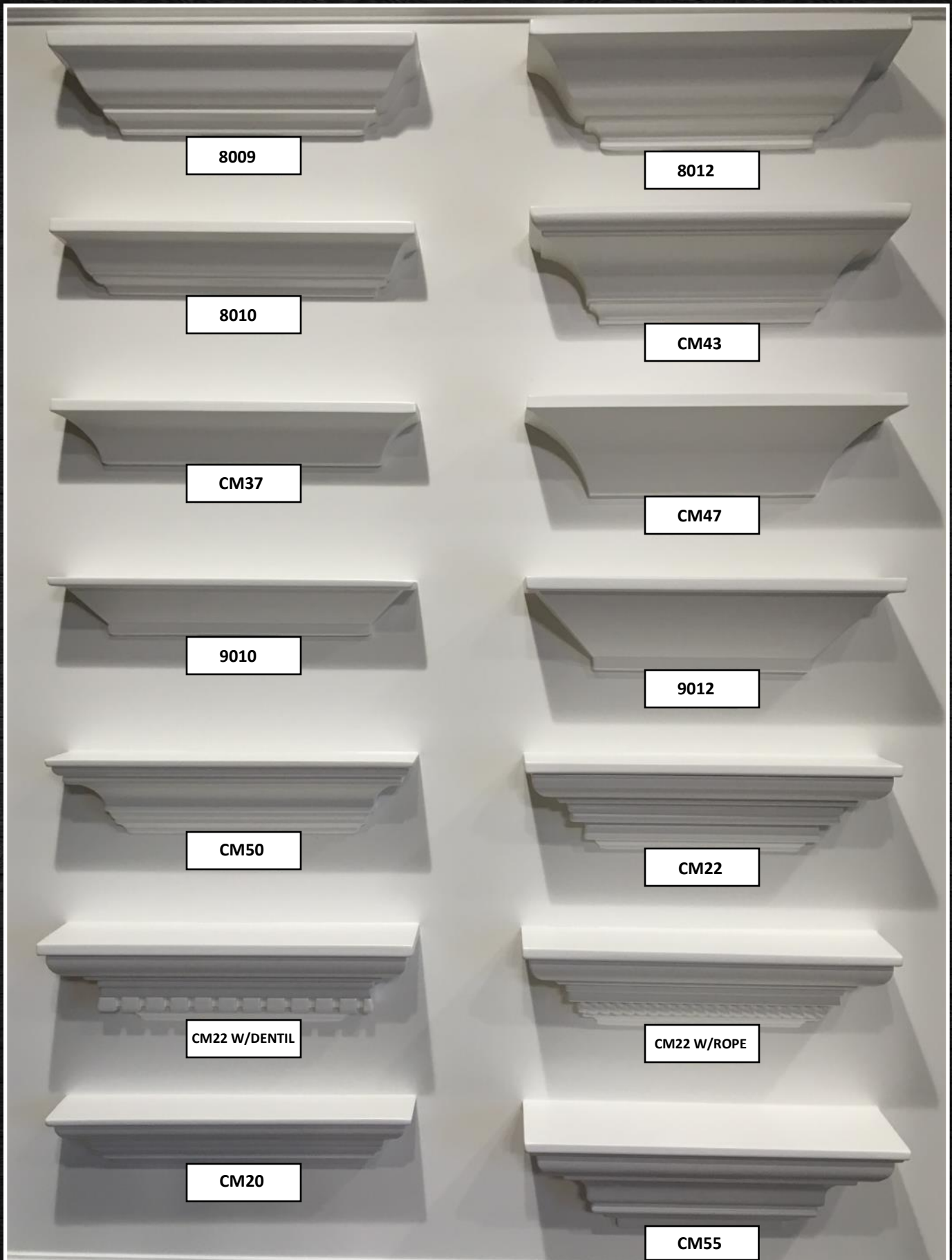
**Inset**

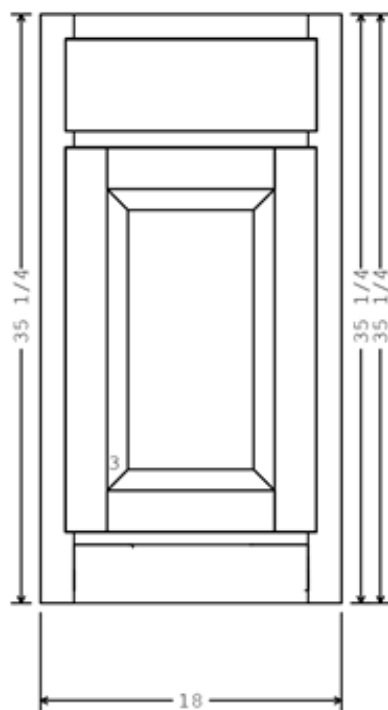


**Full overlay with fillers**

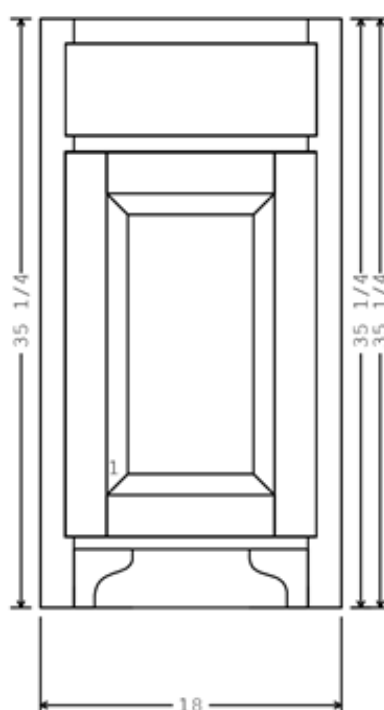


# *Crown Moulding*

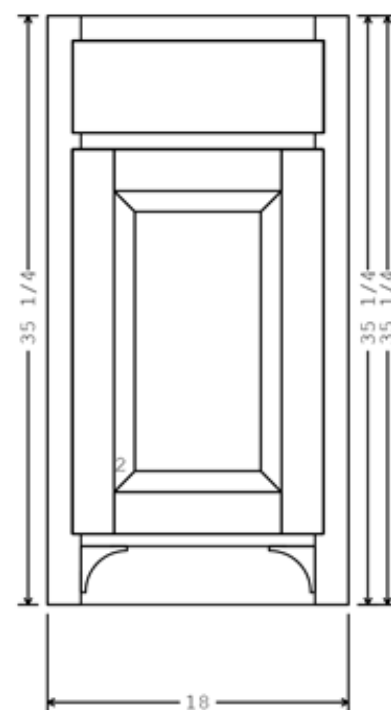




SQUARE TOE KICK



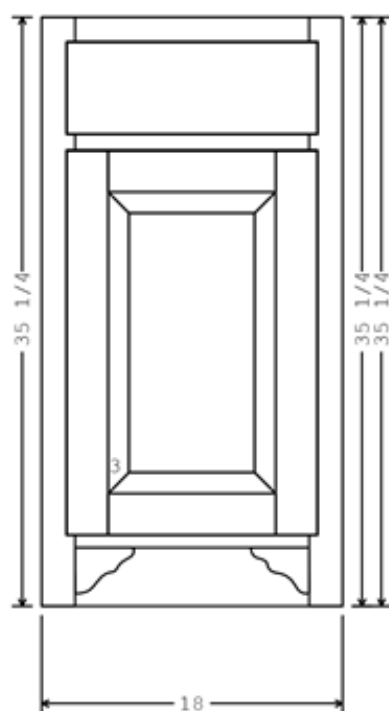
SCROLL TOE KICK #1



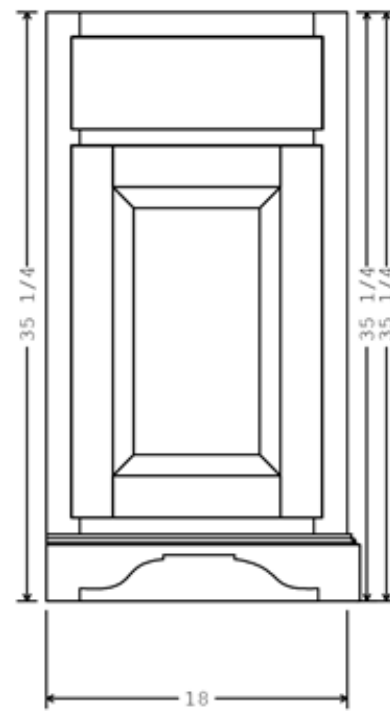
RADIUS TOE KICK #2

## CHANDLER CABINETS STANDARD TOE KICKS

(UPGRADE)



SCROLL TOE KICK #3



SCROLLED OVERLAY TOE KICK B-425 TOE KICK #4



# *Round Corners*

**Classic**



**Tara**



**Vintage**



**Rope**



Round corners added to finished ends only





**Pot and pan drawers bumped out with classic round corners**



**Pot and pan drawers bumped out with tara round corners**

# *Legs and Feet*

UPGRADE

**WLF60**

**6" French Leg**



**BF70**

**4" Turned Bunn Foot**



**BF90**

**4 1/4" Square Bunn Foot**



**6" Tapered Leg**





# *Posts*

Level 1  
POST001

**P1-5**



**P37-5**



**P38**



**P27**



Posts are 5" x 5"





**Free standing P-38 posts on back of island**



**P37-5 posts  
on back of  
island**



**P1-5 posts on island  
(shown w/upgraded B-425 base)**

# Corbels

CORQ-2

Traditional

5" x 6 3/4" x 14"



CORBB-2

Acanthus

5" x 7" x 14"



COR22-2

Mission

5" x 7" 14"



COR32-2

Radius

5" x 7" x 14"



COR32-3

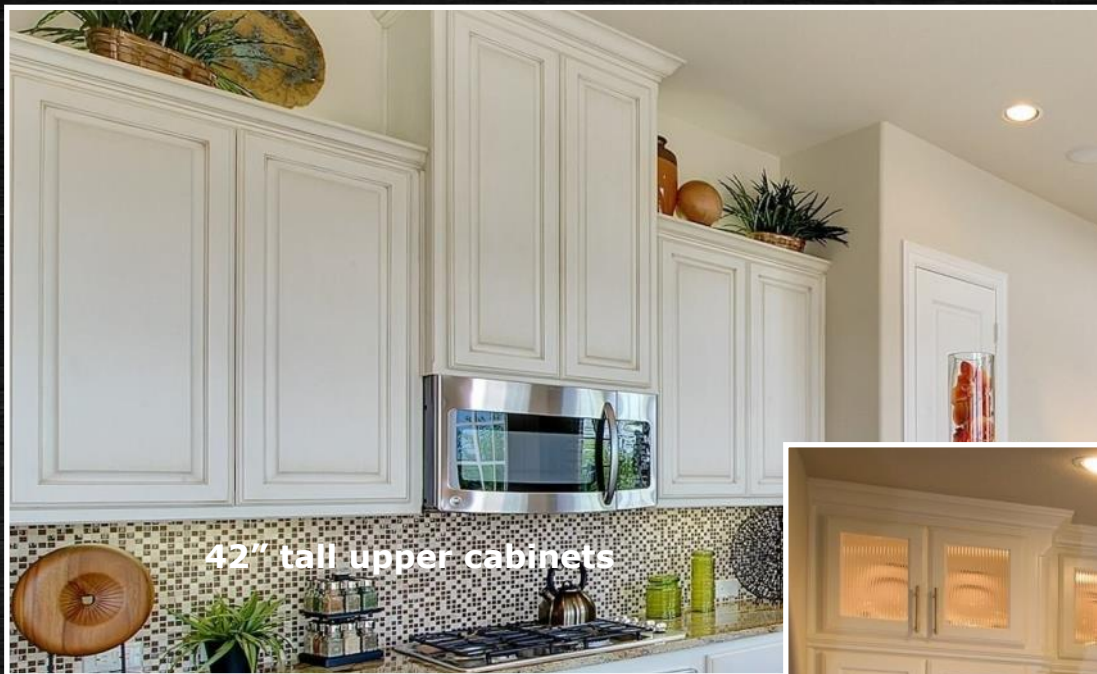
Radius

5" x 18" x 18"



\*Not available on  
spice roll-outs





42" tall upper cabinets



Open shelves to bridge uppers



Upper cabinets to ceiling



Island with paneled ends





**Pot and pan drawer stack**  
(36" cooktop shown)



**4 drawer stack**



**Wood trash pull out**



**R-A-S trash pull out**  
(trash cans included)



**Roll out drawers**



**Peg drawer system**





**Knife drawer insert**



**Spice drawer insert**



**Utensil drawer insert**



**Spice pull out**



**Tray storage above oven**



**Silverware drawer insert**





**Appliance garage**



**Wine rack and stem glass holder**



**Prep for apron sink**



**Tray storage in base cabinet**

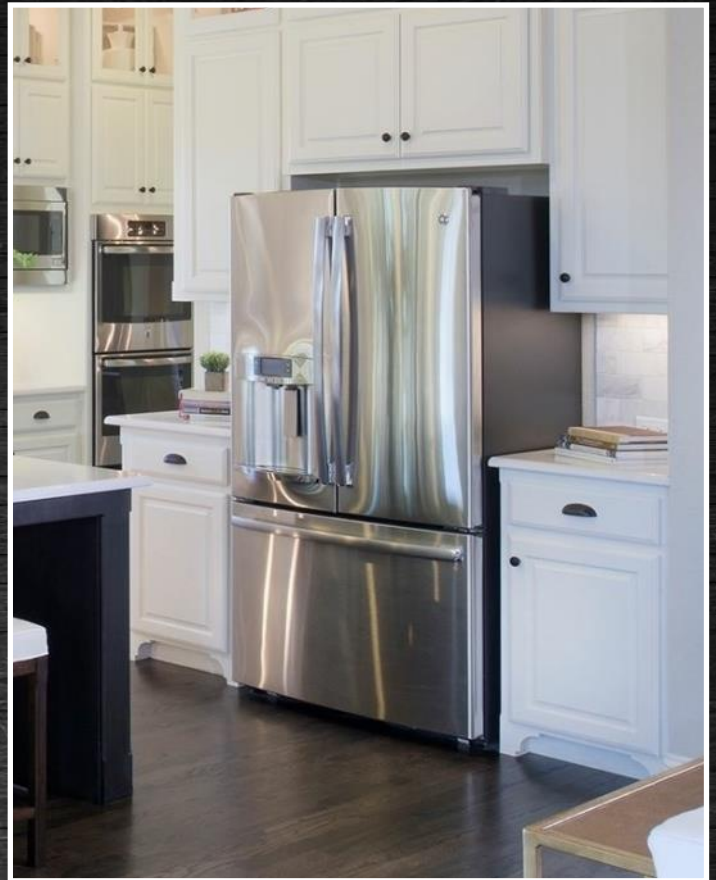


**Cascading cabinetry**





**Built-in refrigerator**



**Standard refrigerator opening**



**Flip trays at sink**



**X-pattern panels**





**Mud room bench**





**Linen Cabinet**



**Linen Tower**





**Towel cabinet above toilet**

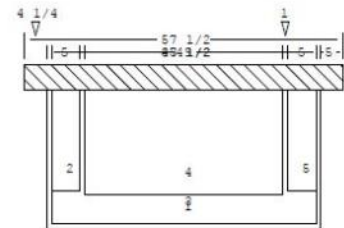
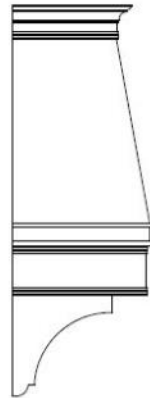
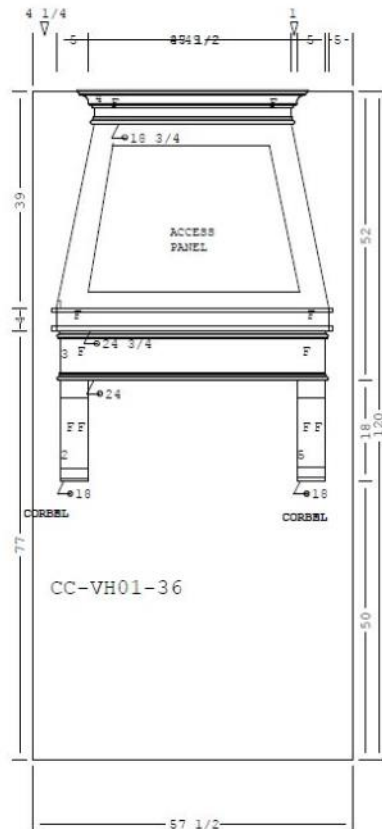


**Hamper pull out**



**Hamper tilt out**

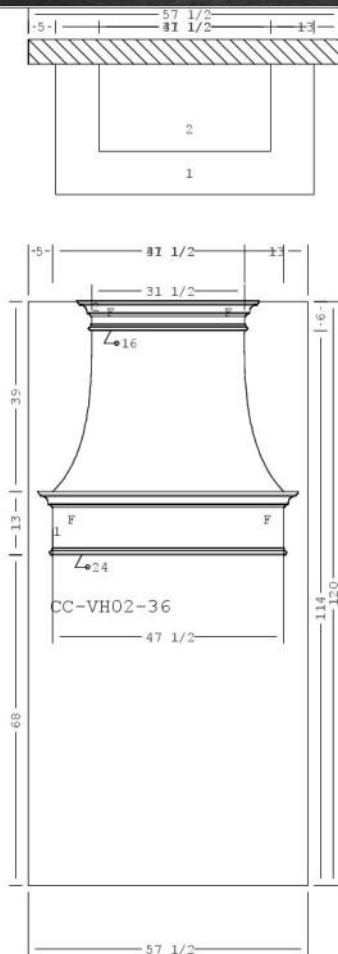
# CC-VH01



Scale:	Approved by:	Drawn by:
Date:		Revised:
Chandler Cabinets		Drawing number:
CC-VH01		



# CC-VH02



## Chandler Cabinets

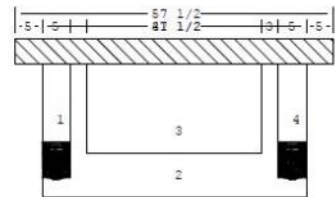
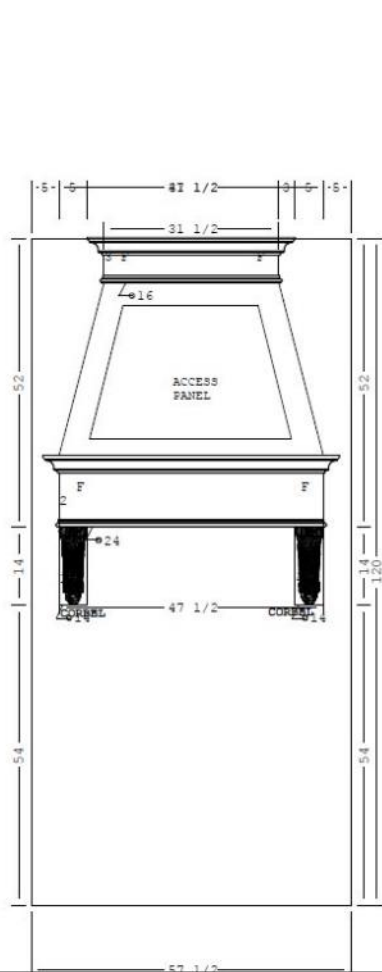
Scale:	Approved by:	Drawn by: jm
Date: 4/3/18	Revised:	

## Chandler Cabinets

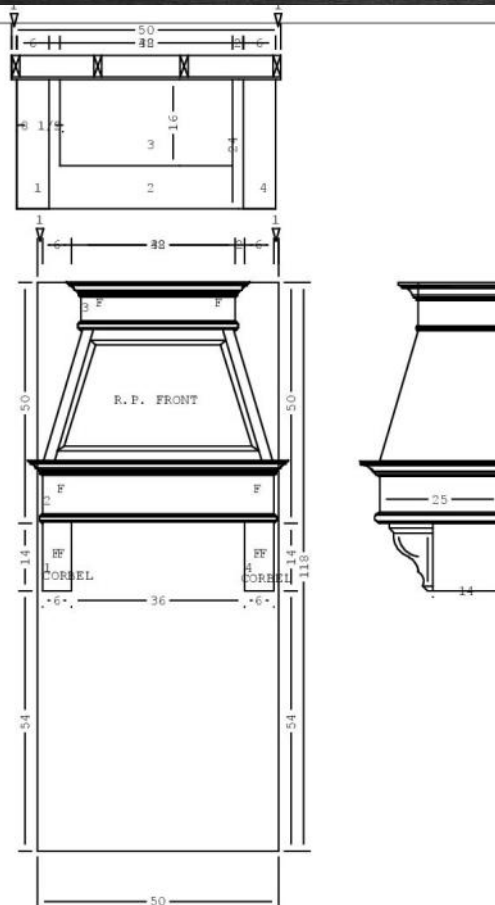
CC-VH02 - NO CORBELS	Drawing number:
----------------------	-----------------



# CC-VH03



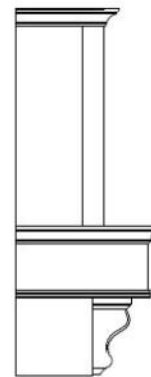
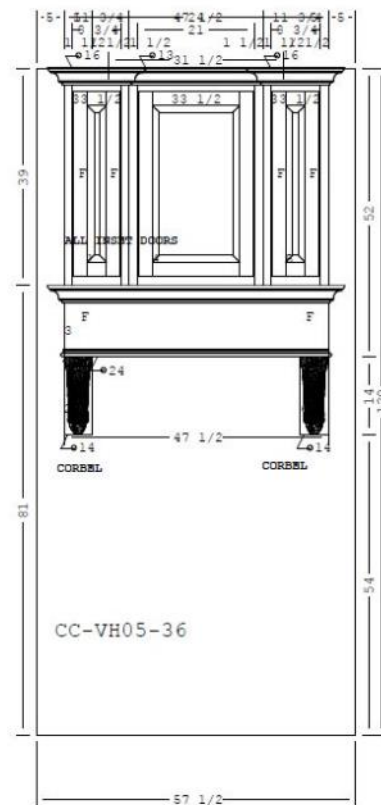
Scale:	Approved by:	Drawn by:
Date:		Revised:
Chandler Cabinets		
CC-VH03		Drawing number:



Chandler Cabinets		
Scale:	Approved by:	Drawn by: .m
Date: 4/3/18		Revised:
Chandler Cabinets (L)		
VH04-36		Drawing number:

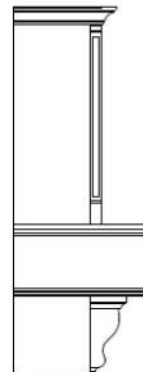


Picture coming soon!



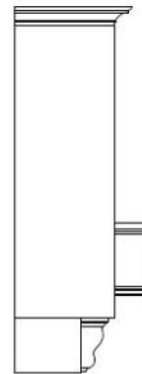
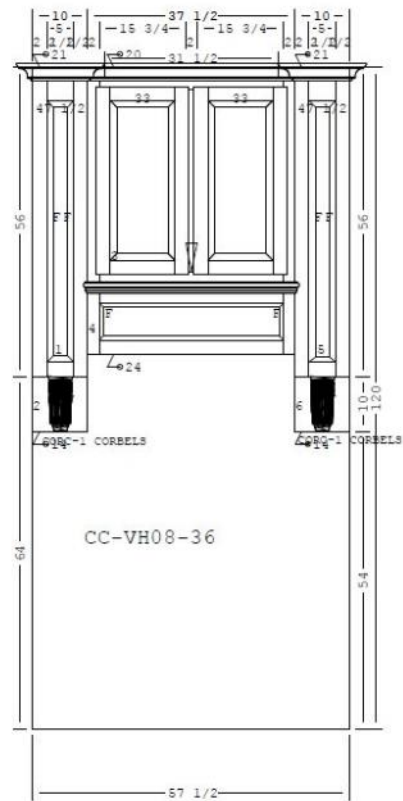
Scale:	Approved by:	Drawn by: EACB
Date: 4-9-13		Revised:
Chandler Cabinets		
CC-VH05-36		Drawing number:

## A modern kitchen featuring white cabinetry with glass-front upper cabinets displaying glassware. The backsplash is made of light-colored marble tiles. A window with a white valance is visible on the right. The countertop is white, and the sink area includes a black faucet and a small potted plant. The lighting is warm and ambient.



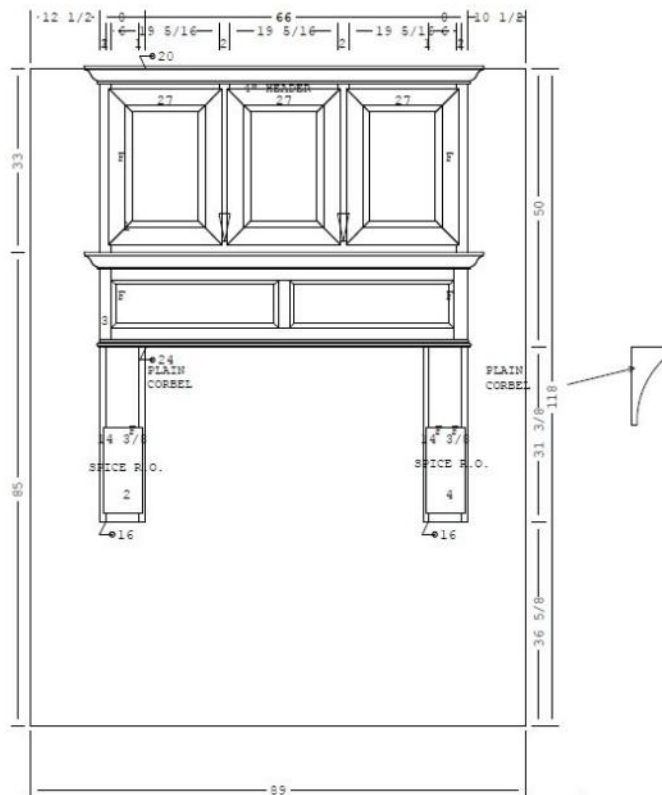


# CC-VH08



Scale:	Approved by:	Drawn by: JACH
Date: 4-9-13		Revised:
Chandler Cabinets		Drawing number:
CC-VH08-36		

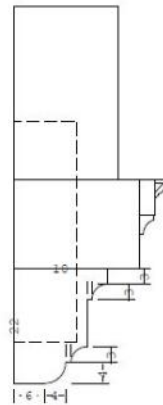
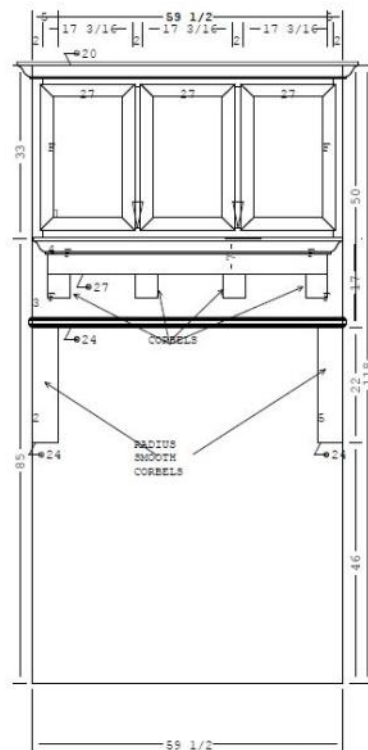
# CC-VH09



Scale:	Approved by:	Drawn by: GAC
Date: 4-9-13		Revised:
Chandler Cabinets		Drawing number:
CC-VH09		



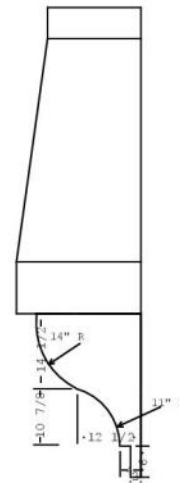
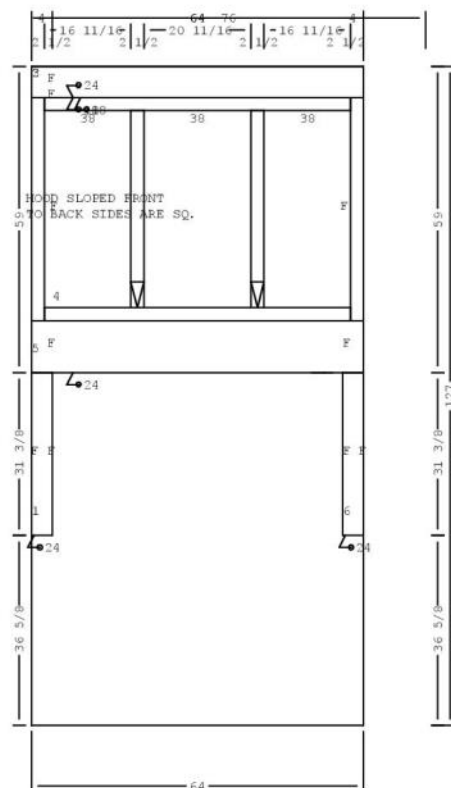
# CC-VH10



UPGRADE

Scale:	Approved by:	Drawn by: SAK
Date: 4-9-13	Revised:	
Chandler Cabinets		
CC-VH10-36		Drawing number:

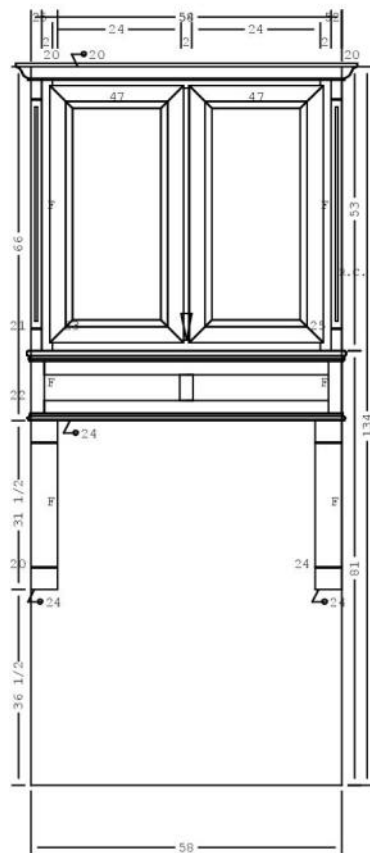
# CC-VH11



Scale:	Approved by:	Drawn by: BACH
Date: 4-5-13	Swined:	
Chandler Cabinets		
CC-VH11-36		Drawing number:

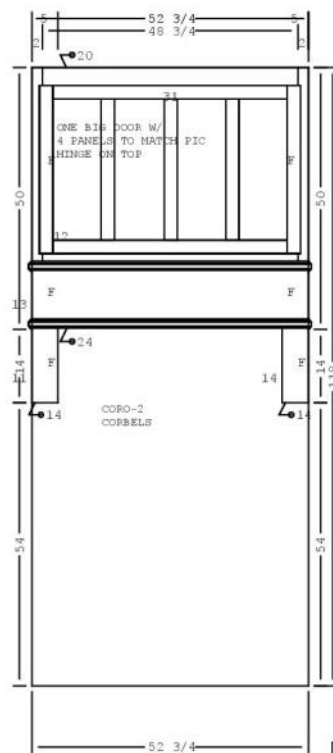


# CC-VH12



Scale:	Approved by:	Drawn by: ZAC/H
Date: 4-8-13		Revised:
Chandler Cabinets		
CC-VH12-36		Drawing number:

# CC-VH13

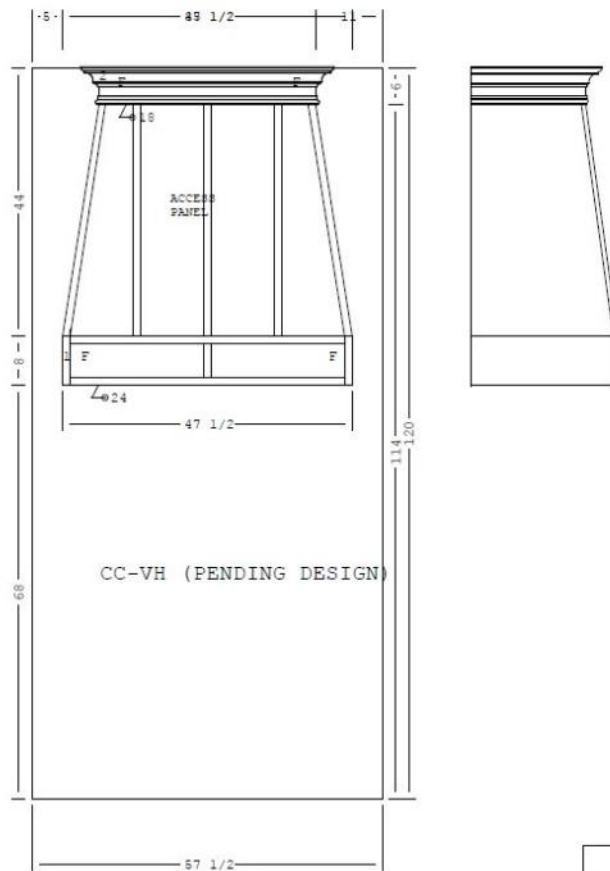


Scale:	Approved by:	Drawn by: SACH
Date: 4-9-13		Revised:
Chandler Cabinets		
CC-VH13-36		Drawing number:



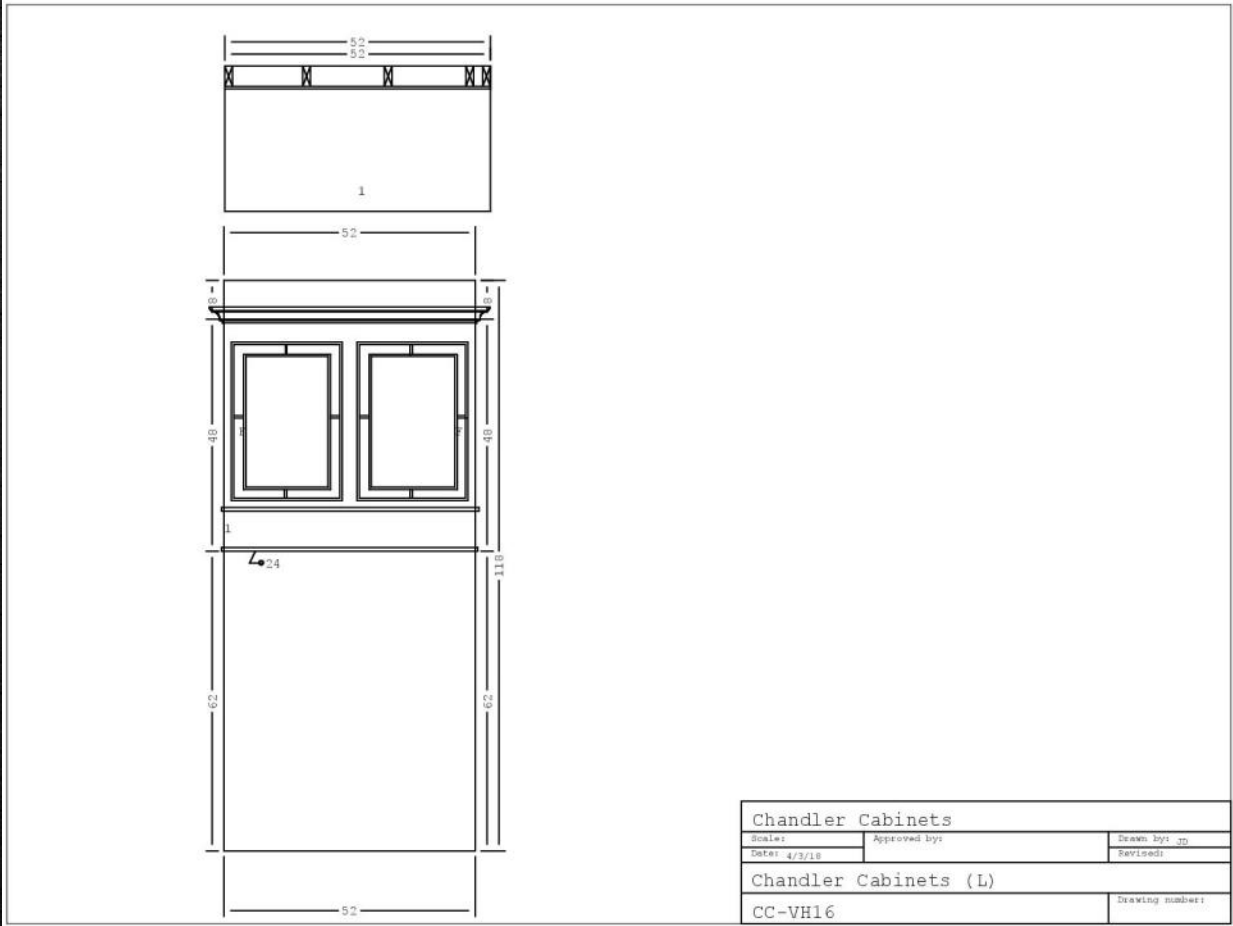
# CC-VH14

Stainless Optional



CC-VH (PENDING DESIGN)

Scale:	Approved by:	Drawn by: CC
Date: 5-16-16		Revised:
Chandler Cabinets		
CC-VH (PENDING DESIGN)		Drawing number:



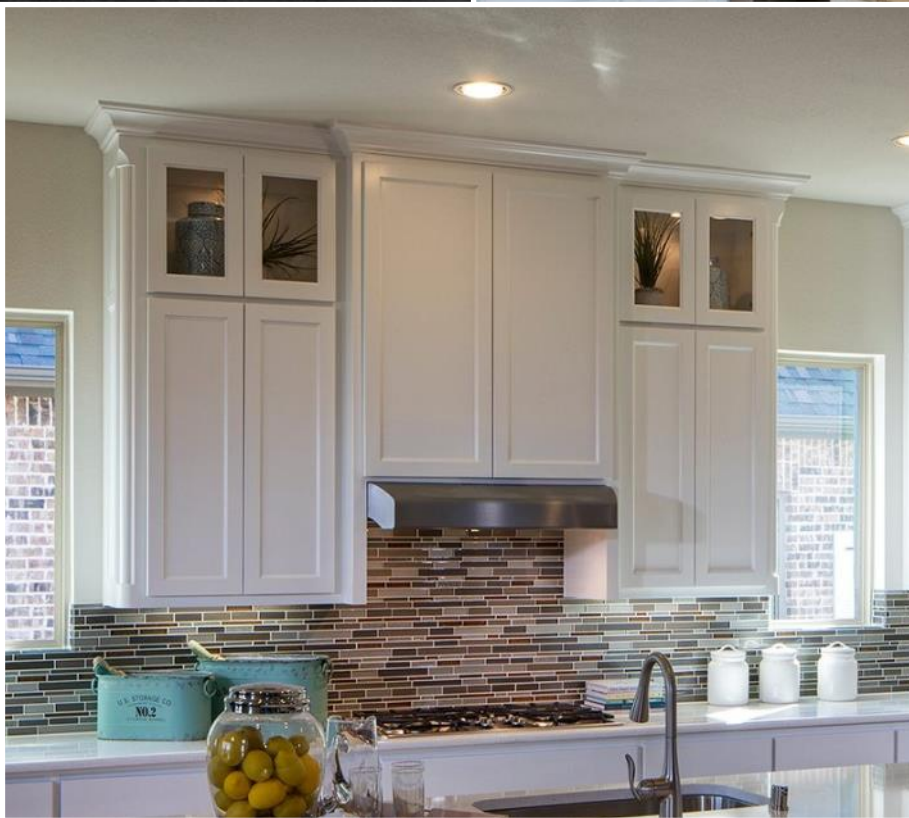


**Mantel style hood w/shiplap**





## *Other hood options*





# *Powder Vanities*



**Transitional**



**Traditional**



# *Powder Vanities*



**Contempo 2**

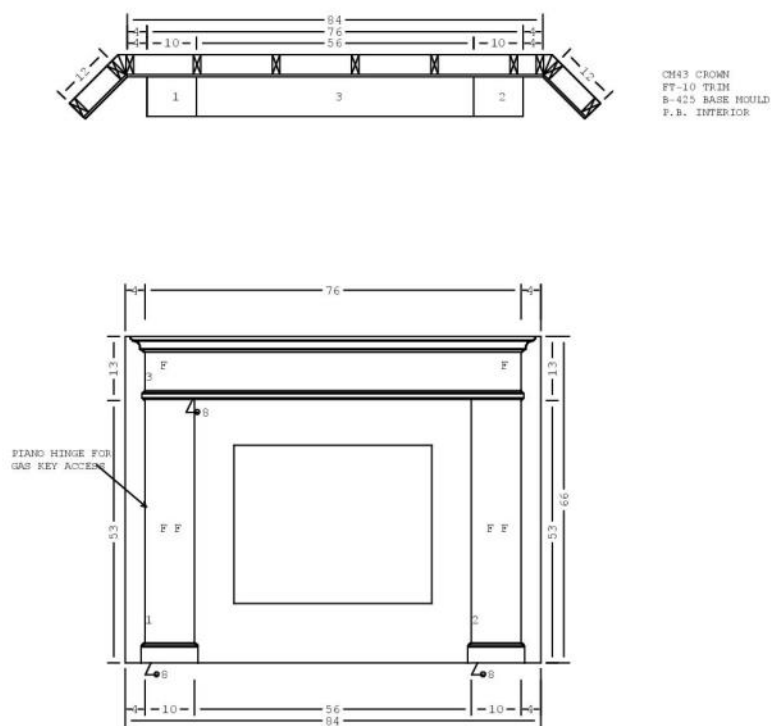


**Floating Vanity**



## Mantels

**Picture coming soon!**



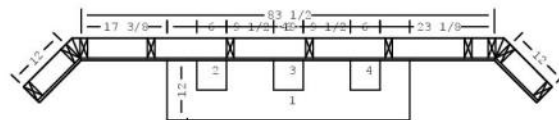
Scales	Approved by:	Drawn by:
Date:		Revised:
Chandler Cabinets (L)		
AMERICAN CLASSIC LEVEL A		Drawing number:

**Picture coming soon!**

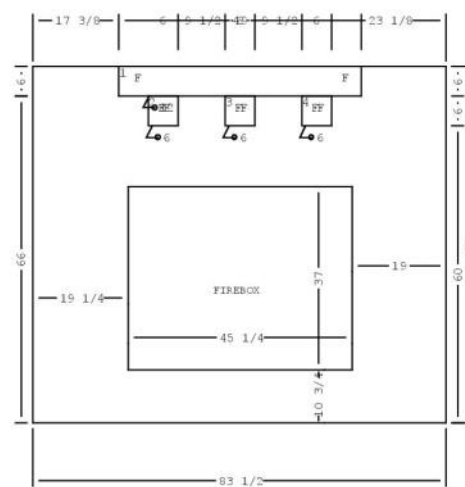




# Mantels

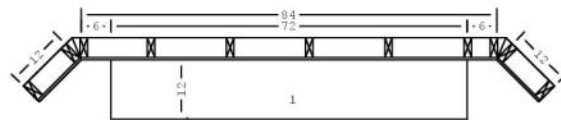


SMOOTH CEDAR MANTEL  
6" X 6" CORBELS  
MNTL 5001

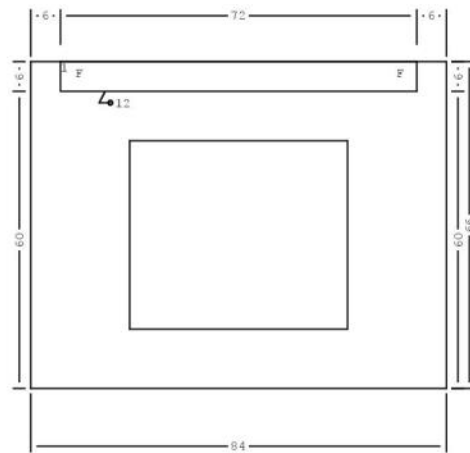


Scale:	Approved by:	Drawn by:
Date:		Revised:
Chandler Cabinets (L)		
MNTL 5001		Drawing number:

# Mantels



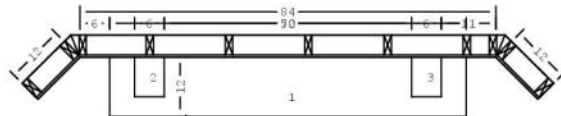
SMOOTH CEDAR MANTEL  
NO CORBELS  
PRE-FINISHED (EBCNY)



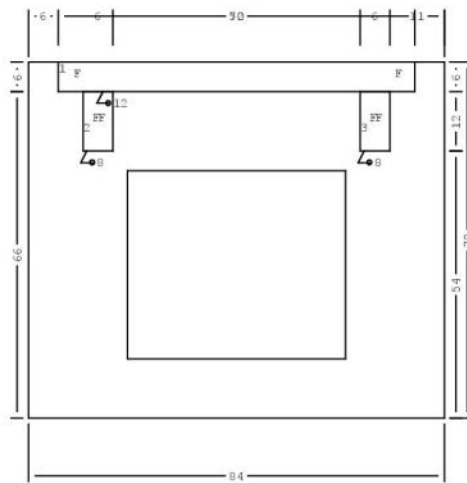
Scale:	Approved by:	Drawn by:
Date:		Revised:
Chandler Cabinets (L)		
MNTL 6005 NO CORBELS		Drawing number:



# Mantels

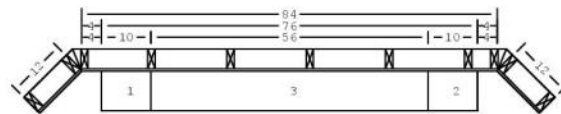


SMOOTH CEDAR MANTEL  
6" X 12" RADIUS CORBELS  
PPE-FINISHED (TBD)

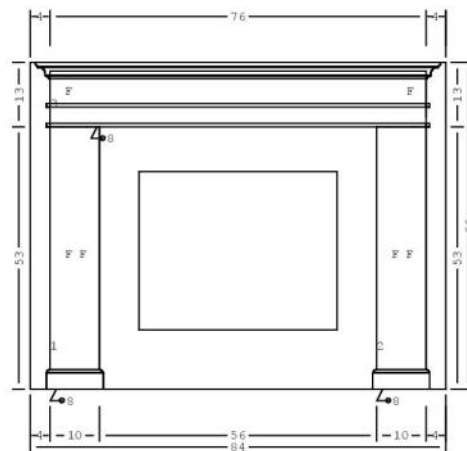


Scale:	Approved by:	Drawn by:
Date:		Revised:
Chandler Cabinets (L)		
MNTL 6005 W/ CORBELS		Drawing number:

# Mantels



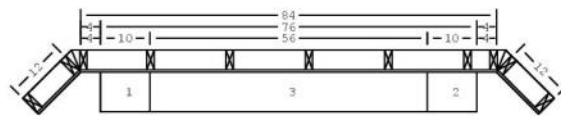
CM43 CROWN  
3/4" STILE FOR TRIM  
B-425 BASE MOULD  
P.B. INTERIOR  
PRE-FINISHED (CHANDLER WHITE WHITE)



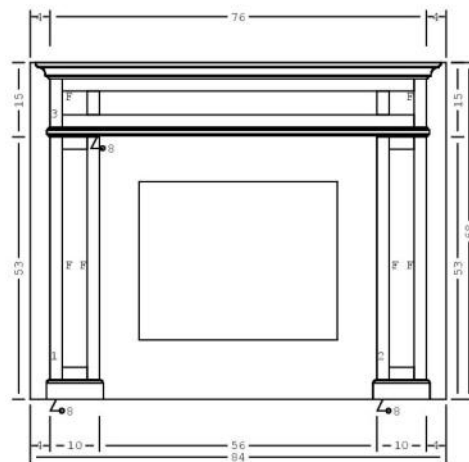
Scale:	Approved by:	Drawn by:
Date:		Revised:
Chandler Cabinets (L)		
MNTL 8005		Drawing number:



# Mantels

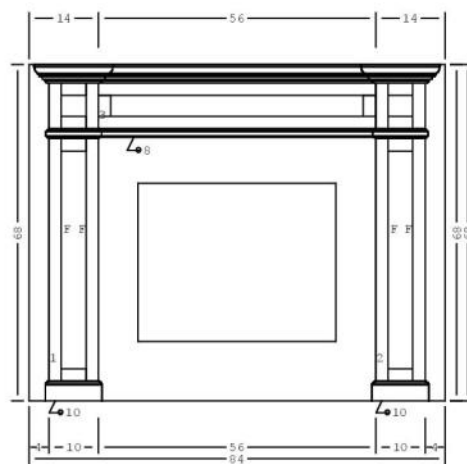
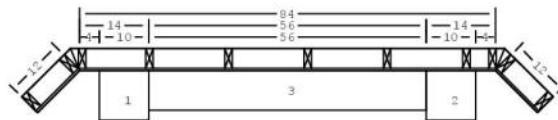


CM-43 CROWN  
 FT-10 TRIM  
 B-425 BASE MOULD  
 F.B. INTERIOR  
 PPE-FINISHED (CHANDLER WHITE)



Scale:	Approved by:	Drawn by:
Date:		Revised:
Chandler Cabinets (L)		
MNTL 8010		Drawing number:

# Mantels



Scale:	Approved by:	Drawn by:
Date:	Revised:	
Chandler Cabinets (L)		
MNTL 8015		Drawing number:



# Hardware

UPGRADE

## Level 1



*Brenton*

239

BNBDL / SN / ORB / PC



*Belcastel 1*

MO6303

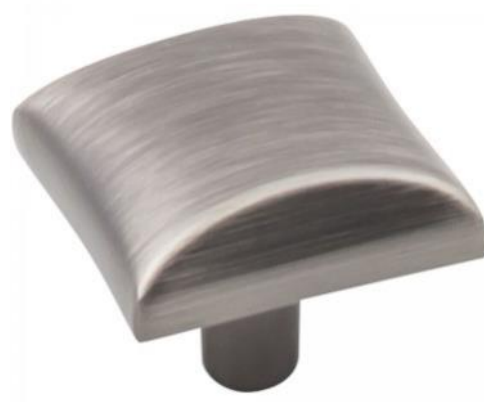
BNBDL / SN / ORB / PC



*Cosgrove*

382

BNBDL / SN / ORB / PC



*Glendale*

525

BNBDL / SN / ORB / PC

BNBDL - BRUSHED PEWTER

SN - SATIN NICKEL

ORB - OIL RUBBED BRONZE

PC - POLISHED CHROME

## *Level 2*



*Naples*

156  
SN / PC



*Stanton*

625-96  
SN / PC



*Asher*

193-4  
BNBDL / SN / ORB / PC



*Belfast*

308-128  
SN / PC



*Glendale*

525-96  
BNBDL / SN / ORB / PC



*Florence*

239  
BNBDL / SN / ORB / PC





# CHANDLER CABINETS

Wood is a natural product and as such will display its own unique characteristics. These characteristics are apparent and are not to be misinterpreted as defects. Natural woods may vary in texture, color, and grain, therefore absorbing paints and stains in different amounts. As a result, variation will occur throughout the wood. Stain and paint samples and images are produced to be as accurate as possible, however actual colors may vary from sample or image used to show color.

## FACTORY FINISHED PAINT COLORS



Chandler  
White



Canvas Tan



Pewter



Black



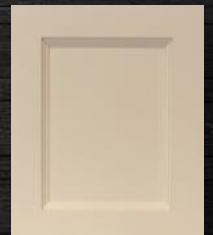
Anew Gray



Cobble Brown



Urban Bronze



Horseradish



Bliss



Cocoa Nada



Benyas



Shitake

## FACTORY FINISHED PAINT COLORS



Pure Snow



Delicate White



Gypsum



Enduring Ice



Kendall  
Charcoal



Tombstone



Fossil



Cyberspace



Calvary



Whales Gray



## FACTORY FINISHED STAIN COLORS



Heritage



Antique  
Brown



Barnwood



Black Licorice



Dark Antique  
Brown



Dark Wheat



Desert Sand



Ebony



English Pub



Flint



Americana



Noble Hall



Spice



Wasabi



Weathered  
Grey